

APPENDIX B

DETAILED ROUTE MAPS

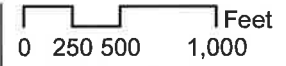
This page intentionally left blank.



Tri-State Generation and Transmission
Burlington - Lamar
Prowers County Mapbook

Map 1

- Transmission Easement
- Transmission Alignment
- Transmission Line - Tri-State
- Transmission Line - Other Utility
- Street
- Parcels
- State Land
- Section
- Township/Range
- County Boundary



Updated By: davmul
 Updated: 5/18/2022

This map includes confidential information of Tri-State and possibly third parties. The user agrees to keep this map and the GIS data included within it confidential, and more specifically, user will not duplicate, forward, sell, or otherwise disclose this map or any of the data contained within it to third parties. Tri-State makes no representation or warranty whatsoever regarding the accuracy or completeness of this map or the data contained within it. Users are encouraged to independently verify Tri-State GIS data and are solely responsible for such verification. All information depicted on this map is subject to revision as better data is made available. Questions regarding this map or the GIS data contained within it should be directed to Tri-State's GIS Manager.





Tri-State Generation and Transmission
Burlington - Lamar
Prowers County Mapbook

Map 2

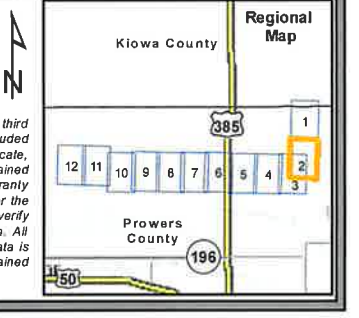
- Transmission Easement
- Transmission Alignment
- Transmission Line - Tri-State
- Transmission Line - Other Utility
- Street
- Parcels
- Section
- Township/Range
- County Boundary



Updated By: davmul

Updated: 5/18/2022

This map includes confidential information of Tri-State and possibly third parties. The user agrees to keep this map and the GIS data included within it confidential, and more specifically, user will not duplicate, forward, sell, or otherwise disclose this map or any of the data contained within it to third parties. Tri-State makes no representation or warranty whatsoever regarding the accuracy or completeness of this map or the data contained within it. Users are encouraged to independently verify Tri-State GIS data and are solely responsible for such verification. All information depicted on this map is subject to revision as better data is made available. Questions regarding this map or the GIS data contained within it should be directed to Tri-State's GIS Manager.





Tri-State Generation and Transmission
Burlington - Lamar
Prowers County Mapbook
 Map 3

- Transmission Easement
- Transmission Alignment
- Transmission Line - Tri-State
- Transmission Line - Other Utility
- Street
- Parcels
- State Land
- Section
- Township/Range
- County Boundary

0 250 500 1,000 Feet

Updated By: davmul
 Updated: 5/18/2022

This map includes confidential information of Tri-State and possibly third parties. The user agrees to keep this map and the GIS data included within it confidential, and more specifically, user will not duplicate, forward, sell, or otherwise disclose this map or any of the data contained within it to third parties. Tri-State makes no representation or warranty whatsoever regarding the accuracy or completeness of this map or the data contained within it. Users are encouraged to independently verify Tri-State GIS data and are solely responsible for such verification. All information depicted on this map is subject to revision as better data is made available. Questions regarding this map or the GIS data contained within it should be directed to Tri-State's GIS Manager.





Tri-State Generation and Transmission
Burlington - Lamar
Prowers County Mapbook

Map 4

- Transmission Easement
- Transmission Alignment
- Transmission Line - Tri-State
- Transmission Line - Other Utility
- Street
- Parcels
- Section
- Township/Range
- County Boundary



Updated By: davmut

Updated: 5/18/2022

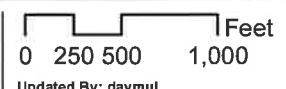
This map includes confidential information of Tri-State and possibly third parties. The user agrees to keep this map and the GIS data included within it confidential, and more specifically, user will not duplicate, forward, sell, or otherwise disclose this map or any of the data contained within it to third parties. Tri-State makes no representation or warranty whatsoever regarding the accuracy or completeness of this map or the data contained within it. Users are encouraged to independently verify Tri-State GIS data and are solely responsible for such verification. All information depicted on this map is subject to revision as better data is made available. Questions regarding this map or the GIS data contained within it should be directed to Tri-State's GIS Manager.





Tri-State Generation and Transmission
Burlington - Lamar
Prowers County Mapbook
Map 5

- Transmission Easement
- Transmission Alignment
- Transmission Line - Tri-State
- Transmission Line - Other Utility
- Street
- Parcels
- Section
- Township/Range
- County Boundary



Updated By: davmul
 Updated: 5/18/2022
 This map includes confidential information of Tri-State and possibly third parties. The user agrees to keep this map and the GIS data included within it confidential, and more specifically, user will not duplicate, forward, sell, or otherwise disclose this map or any of the data contained within it to third parties. Tri-State makes no representation or warranty whatsoever regarding the accuracy or completeness of this map or the data contained within it. Users are encouraged to independently verify Tri-State GIS data and are solely responsible for such verification. All information depicted on this map is subject to revision as better data is made available. Questions regarding this map or the GIS data contained within it should be directed to Tri-State's GIS Manager.

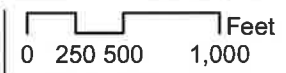




Tri-State Generation and Transmission
Burlington - Lamar
Prowers County Mapbook

Map 6

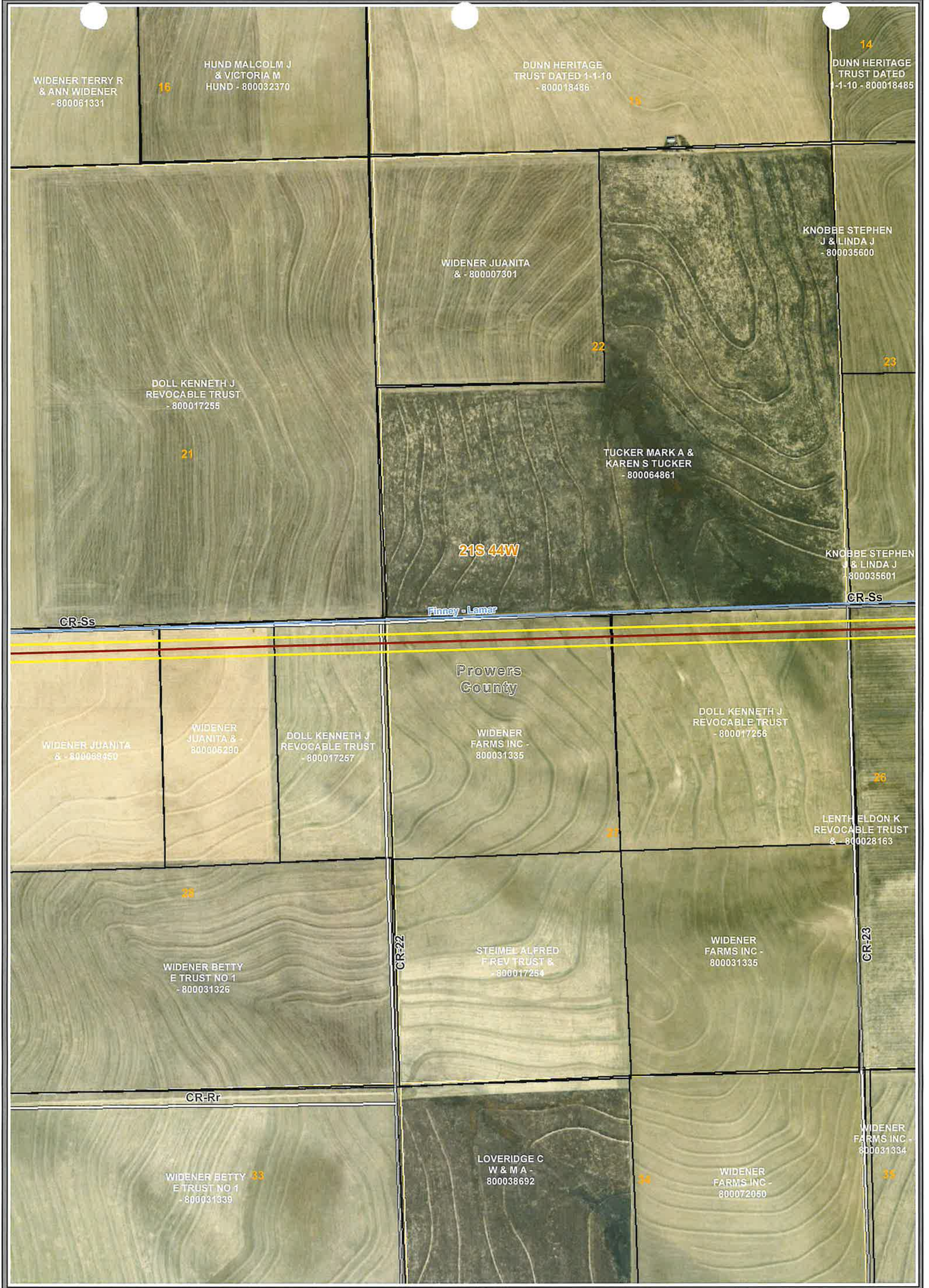
- Transmission Easement
- Transmission Alignment
- Transmission Line - Tri-State
- Transmission Line - Other Utility
- U.S. Highway
- Street
- Parcels
- Section
- Township/Range
- County Boundary



Updated By: davmut
 Updated: 5/18/2022

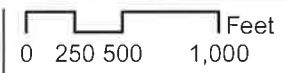
This map includes confidential information of Tri-State and possibly third parties. The user agrees to keep this map and the GIS data included within it confidential, and more specifically, user will not duplicate, forward, sell, or otherwise disclose this map or any of the data contained within it to third parties. Tri-State makes no representation or warranty whatsoever regarding the accuracy or completeness of this map or the data contained within it. Users are encouraged to independently verify Tri-State GIS data and are solely responsible for such verification. All information depicted on this map is subject to revision as better data is made available. Questions regarding this map or the GIS data contained within it should be directed to Tri-State's GIS Manager.





Tri-State Generation and Transmission
 Burlington - Lamar
 Prowers County Mapbook
 Map 7

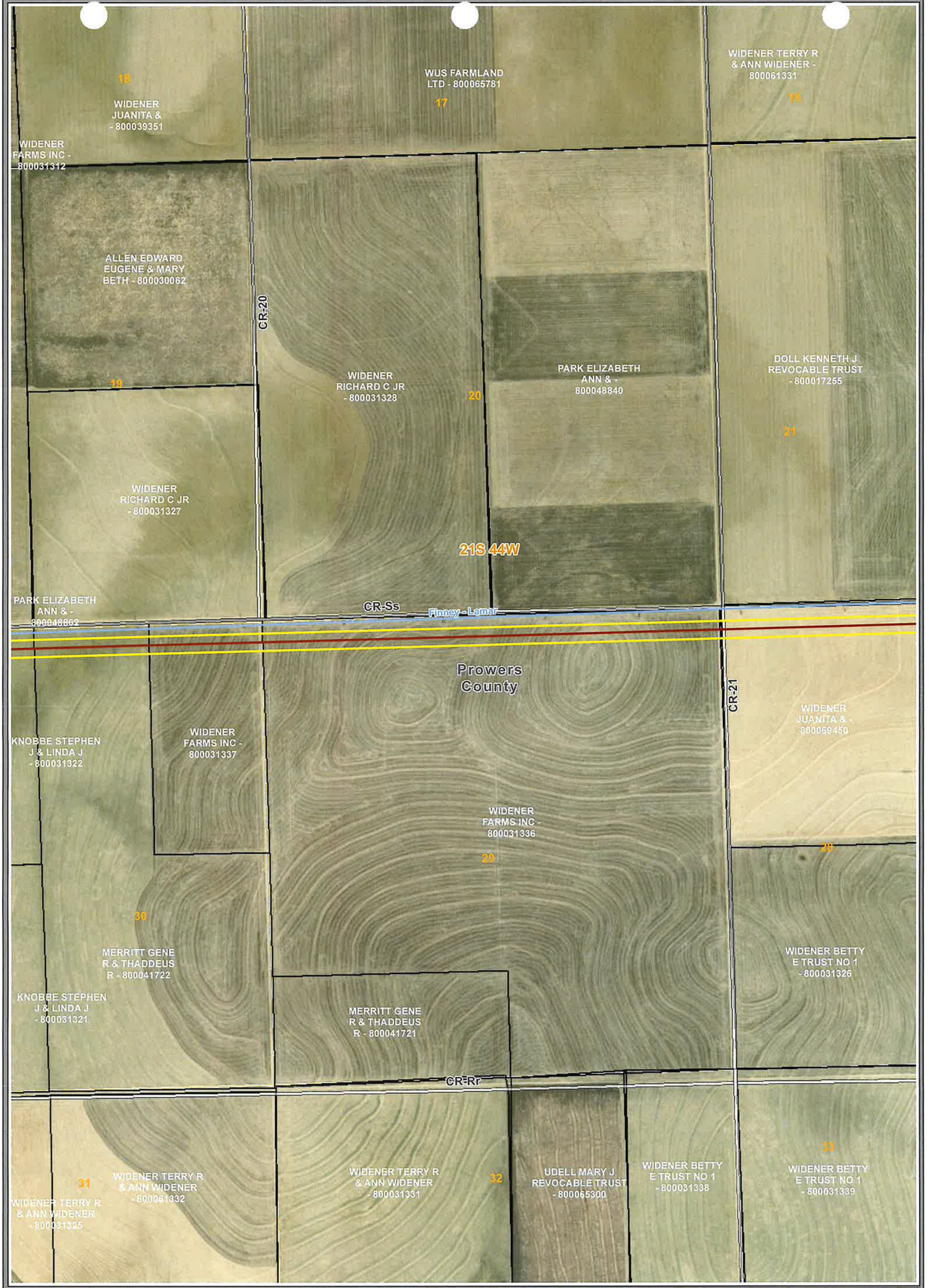
- Transmission Easement
- Transmission Alignment
- Transmission Line - Tri-State
- Transmission Line - Other Utility
- Street
- Parcels
- Section
- Township/Range
- County Boundary



Updated By: davmul
 Updated: 5/18/2022

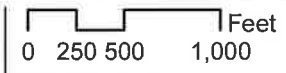
This map includes confidential information of Tri-State and possibly third parties. The user agrees to keep this map and the GIS data included within it confidential, and more specifically, user will not duplicate, forward, sell, or otherwise disclose this map or any of the data contained within it to third parties. Tri-State makes no representation or warranty whatsoever regarding the accuracy or completeness of this map or the data contained within it. Users are encouraged to independently verify Tri-State GIS data and are solely responsible for such verification. All information depicted on this map is subject to revision as better data is made available. Questions regarding this map or the GIS data contained within it should be directed to Tri-State's GIS Manager.





Tri-State Generation and Transmission
Burlington - Lamar
Prowers County Mapbook
Map 8

- Transmission Easement
- Transmission Alignment
- Transmission Line - Tri-State
- Transmission Line - Other Utility
- Street
- Parcels
- Section
- Township/Range
- County Boundary



Updated By: davmul
 Updated: 5/18/2022

This map includes confidential information of Tri-State and possibly third parties. The user agrees to keep this map and the GIS data included within it confidential, and more specifically, user will not duplicate, forward, sell, or otherwise disclose this map or any of the data contained within it to third parties. Tri-State makes no representation or warranty whatsoever regarding the accuracy or completeness of this map or the data contained within it. Users are encouraged to independently verify Tri-State GIS data and are solely responsible for such verification. All information depicted on this map is subject to revision as better data is made available. Questions regarding this map or the GIS data contained within it should be directed to Tri-State's GIS Manager.





Tri-State Generation and Transmission
 Burlington - Lamar
 Prowers County Mapbook
 Map 9

- Transmission Easement
- Transmission Alignment
- Transmission Line - Tri-State
- Transmission Line - Other Utility
- Street
- Parcels
- Section
- Township/Range
- County Boundary

0 250 500 1,000 Feet

Updated By: davmut
 Updated: 5/18/2022
 This map includes confidential information of Tri-State and possibly third parties. The user agrees to keep this map and the GIS data included within it confidential, and more specifically, user will not duplicate, forward, sell, or otherwise disclose this map or any of the data contained within it to third parties. Tri-State makes no representation or warranty whatsoever regarding the accuracy or completeness of this map or the data contained within it. Users are encouraged to independently verify Tri-State GIS data and are solely responsible for such verification. All information depicted on this map is subject to revision as better data is made available. Questions regarding this map or the GIS data contained within it should be directed to Tri-State's GIS Manager.





Tri-State Generation and Transmission
Burlington - Lamar
Prowers County Mapbook
Map 10

- Transmission Easement
- Transmission Alignment
- Transmission Line - Tri-State
- Transmission Line - Other Utility
- Street
- Parcels
- State Land
- Section
- Township/Range
- County Boundary



Updated By: davmul

Updated: 5/18/2022

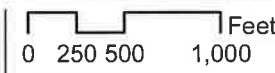
This map includes confidential information of Tri-State and possibly third parties. The user agrees to keep this map and the GIS data included within it confidential, and more specifically, user will not duplicate, forward, sell, or otherwise disclose this map or any of the data contained within it to third parties. Tri-State makes no representation or warranty whatsoever regarding the accuracy or completeness of this map or the data contained within it. Users are encouraged to independently verify Tri-State GIS data and are solely responsible for such verification. All information depicted on this map is subject to revision as better data is made available. Questions regarding this map or the GIS data contained within it should be directed to Tri-State's GIS Manager.





Tri-State Generation and Transmission
Burlington - Lamar
Prowers County Mapbook
Map 11

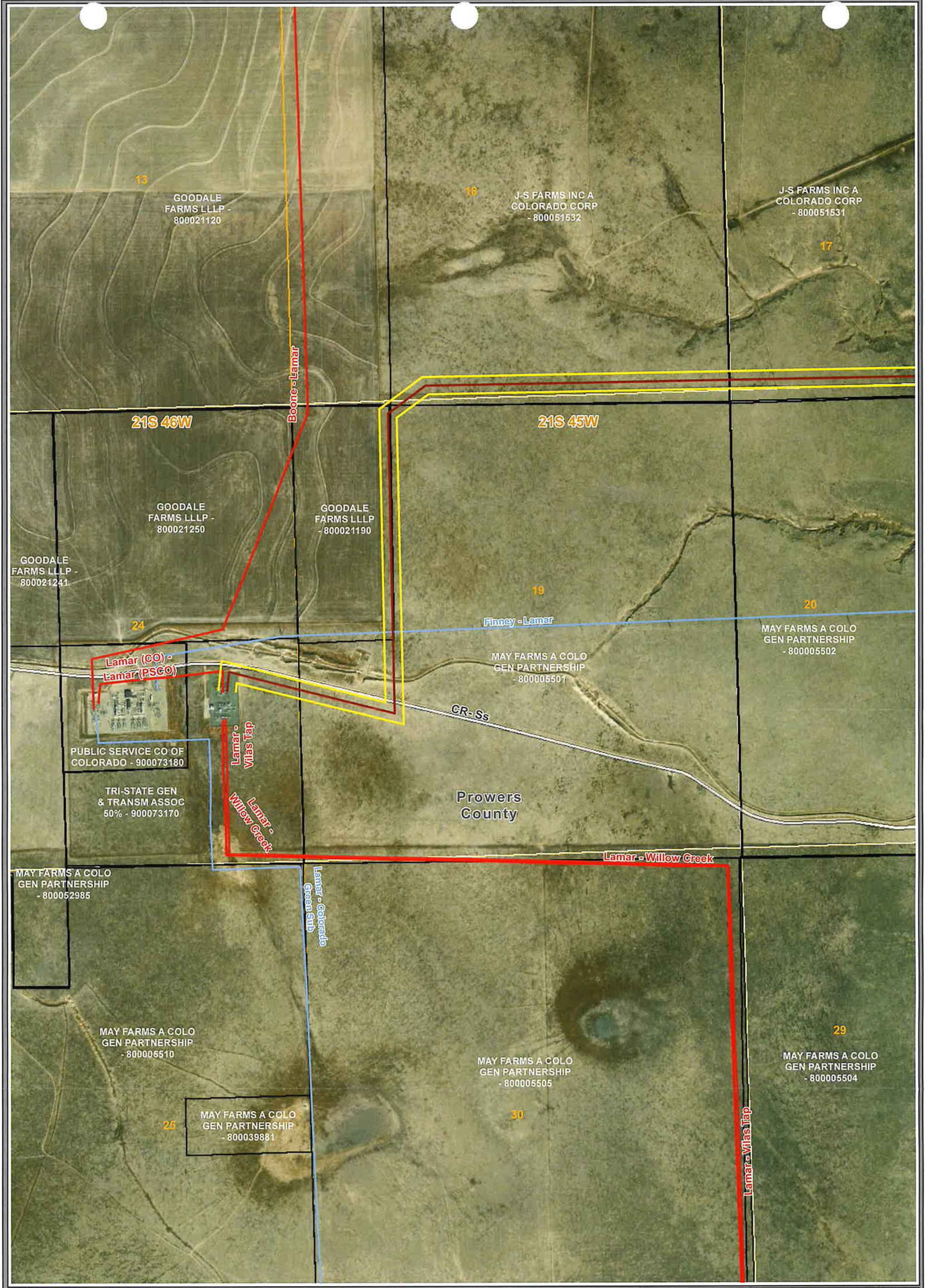
- Transmission Easement
- Transmission Alignment
- Transmission Line - Tri-State
- Transmission Line - Other Utility
- Street
- Parcels
- State Land
- Section
- Township/Range
- County Boundary



Updated By: davmut
 Updated: 5/18/2022

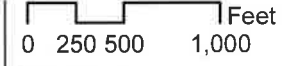
This map includes confidential information of Tri-State and possibly third parties. The user agrees to keep this map and the GIS data included within it confidential, and more specifically, user will not duplicate, forward, sell, or otherwise disclose this map or any of the data contained within it to third parties. Tri-State makes no representation or warranty whatsoever regarding the accuracy or completeness of this map or the data contained within it. Users are encouraged to independently verify Tri-State GIS data and are solely responsible for such verification. All information depicted on this map is subject to revision as better data is made available. Questions regarding this map or the GIS data contained within it should be directed to Tri-State's GIS Manager.





Tri-State Generation and Transmission
 Burlington - Lamar
 Prowers County Mapbook
 Map 12

- Transmission Easement
- Transmission Alignment
- Transmission Line - Tri-State
- Transmission Line - Other Utility
- Street
- Parcels
- Section
- Township/Range
- County Boundary



Updated By: davmul
 Updated: 5/18/2022

This map includes confidential information of Tri-State and possibly third parties. The user agrees to keep this map and the GIS data included within it confidential, and more specifically, user will not duplicate, forward, sell, or otherwise disclose this map or any of the data contained within it to third parties. Tri-State makes no representation or warranty whatsoever regarding the accuracy or completeness of this map or the data contained within it. Users are encouraged to independently verify Tri-State GIS data and are solely responsible for such verification. All information depicted on this map is subject to revision as better data is made available. Questions regarding this map or the GIS data contained within it should be directed to Tri-State's GIS Manager.

